

# GLACVCD BOARD OF TRUSTEES MEETING STAFF REPORTS



Thursday, April 9<sup>th</sup>, 2026

7:00 p.m. Board Meeting

Santa Fe Springs District Headquarters

12545 Florence Avenue, Santa Fe Springs, CA 90670

*Trustee Melissa Ramoso, President*

*Trustee Sonny Santa Ines, Vice President*

*Trustee Catherine Houwen, Secretary-Treasurer*

*General Manager, Susanne Klueh*

*Assistant General Manager, Administration, Allison Costa*

*Assistant General Manager, Vector Management, Steve Vetrone*

*Operations Managers, Martin Serrano & Maritza Olmos*

*Scientific-Technical Manager, Dr. Angela Caranci, PhD*

*Acting Communications Manager, Caroline Gongora*

*Finance Manager, Maribel Palmer*

*Human Resources Manager, Cindy Reyes*

*Facilities & Fleet Manager, Fernando Martinez*

*IT Manager, Rudy Serrano*

*Board General Counsel, Serita Young, Richards, Watson, Gershon*

*Labor Legal Counsel, Oliver Yee, Liebert, Cassidy, Whitmore*

Copies of staff reports or other written documentation relating to agenda items are available online at <https://www.GLAmosquito.org/board-meetings> and are on file at the District's Headquarters at the Front Office for public inspection.

If you have questions regarding an agenda item, please contact the Front Office Staff at (562) 944-9656 during regular business hours.

*Pursuant to the Americans with Disabilities Act, persons with a disability who require a disability-related modification or accommodation in order to participate in a meeting, including auxiliary aids or services, may request such modification or accommodation from the front office at (562)944.9656 or contact Araceli Hernandez at [ahernandez@GLAmosquito.org](mailto:ahernandez@GLAmosquito.org). Notification 48 business hours prior to the meeting will enable the facility staff to make reasonable arrangements to assure accessibility to the meeting.*

# GREATER LOS ANGELES COUNTY VECTOR CONTROL DISTRICT

12545 Florence Avenue, Santa Fe Springs, CA 90670  
Office (562) 944-9656 | Fax (562) 944-7976  
Email: [info@glacvcd.org](mailto:info@glacvcd.org) | Website: [www.glacvcd.org](http://www.glacvcd.org)

## General Managers' Report for April 9, 2026 Board of Trustees Meeting

In April of last year, we reported that our neighbor, the San Gabriel Valley Mosquito & Vector Control District (SGVMVCD), was beginning to gain access to all the unmaintained swimming pools and other mosquito sources left behind in the path of destruction of the devastating wildfires in Altadena. Due to the incredible workload this added to their program, they requested help under the umbrella of our Southern Region Mutual Assistance Agreement and GLACVCD was happy to provide help as best we could without compromising services to our member cities and their residents. A year later, SGVMVCD now presented at the statewide as well as national association meetings about all the work they did in order for mosquito control services to be considered and approved as necessary preemptive intervention within the emergency response. They were able to secure FEMA funding for some of their efforts. We would like to take this opportunity to thank them for their efforts and congratulate them on this achievement.

This year's mosquito season started with a bang. Scientific-Technical staff's surveillance efforts show mosquito abundance numbers across all species not usually collected until much later in the year, breaking mosquito abundance records right alongside the centennial temperature records that fell across Southern California during a heatwave earlier in March. This confirms staff and residents' perception of heightened mosquito activity for this time of year. The resulting increase in mosquito sources needing treatment along with increase in service requests have made field staff incredibly busy.

In order to keep up with these early season demands, we approved and HR facilitated the early hire of returning seasonal staff. The first few returnees will report to work April 13<sup>th</sup>, and we can't wait to put their efforts to good use.

Maintenance is focused on purchasing remaining vehicles budgeted for FY 25/26, continuing to prepare vehicles and equipment for the season, while also addressing maintenance needs across three facilities. Under Caroline Gongora's leadership as Acting Communications Manager, the Communications Department continues to make good progress in developing our outreach campaign. In addition, we have been evaluating the option of securing outside assistance with our informational campaign leading up to a renewed attempt to secure future District funding through a Proposition 218 in fall of 2027.

The Finance Department continues to process payroll and AP functions while also solidifying processes and policies. The work on the upcoming FY26/27 budget is making good progress, and we anticipate calling a meeting of the Budget & Finance Committee towards the end of the month to review savings allocations from FY24/25, a few budget transfers within the current fiscal year, and last but certainly not least, the FY26/27 budget proposal.

We are moving forward with tenant improvements at the Pacoima facility, as the contract with IDS has been signed, they have scanned the building, and an official kick-off meeting will be held shortly. Lastly, we thank the Board for approving the funds for staff attendance at the AMCA Annual Conference in Portland, OR, and especially Trustee Barcena for accompanying us.

Sincerely,



Susanne Klueh  
General Manager



Allison Costa  
Assist. GM - Administration



Steve Vetrone  
Assist. GM - Vector Management

GREATER LOS ANGELES COUNTY VECTOR CONTROL DISTRICT

SCIENTIFIC-TECHNICAL REPORT

March 2026

*Angela Caranci, Scientific-Technical Manager*  
*Nicolas Tremblay, Senior Vector Ecologist*  
*Tanya Posey, Ryan Amick & Courtney Chagolla, Vector Ecologists*  
*Colt Bellman & Alison Ross, Assistant Vector Ecologists*  
*Christie Miranda, Limited-Term Scientific-Technical Program Projects Assistant*  
*Christopher Ortiz, Vector Field Assistant*

I. RISK ASSESSMENT

The Risk Assessment (RA) for March cannot be calculated as standard surveillance for adult mosquito activity is just beginning for 2026. Additionally, the State Health Department discontinues the dead bird program for the winter. An updated RA is expected for the May 2026 meeting report.

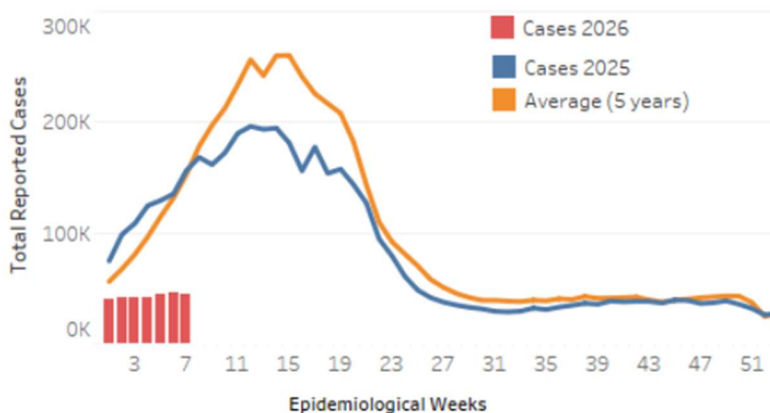
II. GLACVCD MOSQUITO-BORNE DISEASE WATCH SUMMARY

- No WNV human cases were reported within District boundaries in March.
- One travel-related dengue virus case was reported to the District by Los Angeles County Public Health in March.
- Mosquito trapping resumed on March 2, 2026. Following winter rain events, and with March temperatures averaging >10 degrees warmer than prior year (68°F vs 56°F in 2025), early season surveillance has recorded elevated abundance of both *Culex quinquefasciatus* and *Aedes aegypti* mosquitoes compared to 5-year averages.

	Avg Daily Temp	Avg F/TN	
		<i>Cx. quinquefasciatus</i>	<i>Ae. aegypti</i>
Mar-25	56.3	6.9	0.07
Mar-26	68.7	40.9	1.14

- Pan-American Health Organization continues to report lower levels of suspected dengue cases in the first 7 weeks of 2026 (Figure below).

Figure 1. Suspected dengue cases as of EW 7 in 2026, 2025 and average of the last 5 years. Region of the Americas.



## III. GLACVCD BLACK FLY & MIDGE SURVEILLANCE

### Black Fly

- Black Fly surveillance has been conducted in response to heightened early season temperatures. Treatment considerations have been made accordingly.
- Weekly surveillance will continue in Special Assessment Areas of the Los Angeles River and Arroyo Seco Wash through mid-November, depending on weather.

### Non-Biting Midge Fly

- Weekly midge surveillance of the Hansen, San Gabriel River Coastal, and Rio Hondo Spreading Grounds, L.A. Equestrian Center, and Silver Lake Reservoir has recommenced for 2026 and will continue through November.

## IV. STERILE INSECT TECHNIQUE (SIT)

- Collaborative work continues with Orange County MVCD and MosquitoMate.
- In-house colony maintenance efforts continue to build while additional supportive commercial enterprises are being vetted.
- Progress presentations have been shared widely at annual conferences for both Mosquito and Vector Control Association of California (Palm Springs Feb 2026) and American Mosquito Control Association (Portland, OR March 2026).
- Sterile male releases will begin again in June 2026.

## V. STATEWIDE MOSQUITO-BORNE DISEASE WATCH 2026

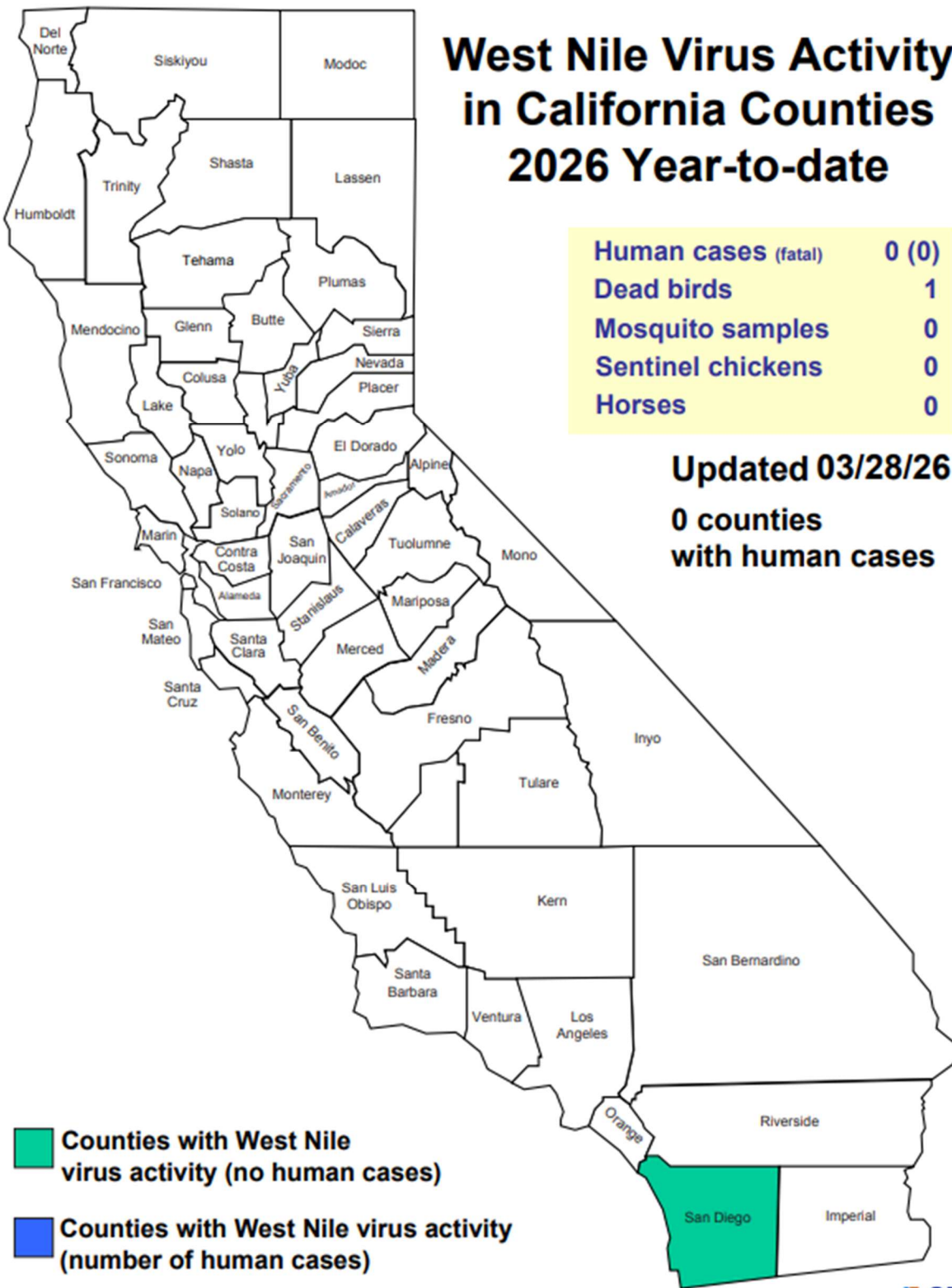
- Initial CPDH West Nile Virus statewide activity map shared (Figure below).
- Reporting Period: March 01-March 28, 2026.

## VI. Off-Season Activities

In preparation for the coming 2026 season, Sci-Tech staff have worked to implement revised protocols and increase workflow efficiencies by:

- Continuing to repair and refurbish trapping equipment, including development and in-house production of 3D printed parts.
- Expediting recruitment processes for Vector Field Assistant (Sylmar) and 1 Seasonal Lab Assistant (Sylmar).
- Partially completing an updated inventory and coordinating ordering efforts to prepare for in-season needs.
- Reorganizing laboratory space to better service daily operations.
- Coordinating development of vehicle supply boxes to ensure field readiness.
- Working with IT to develop updated abundance maps and first-generation Sci-Tech field app for surveillance trap tracking.

## West Nile Virus Activity in California Counties 2026 Year-to-date



**GREATER LOS ANGELES COUNTY VECTOR CONTROL DISTRICT**

**OPERATIONS REPORT**

**March 2026**

*Martin Serrano, Operations Manager, Headquarters*

*Mark Hall, Environmental Program Manager*

*Maritza Olmos, Operations Manager, Sylmar*

*Marvin Pineda, Acting Operations Manager, Sylmar*

**Departmental Activities**

**Operations**

- The Operations management team is finalizing preparations for the District's annual Field Response Exercise in coordination with the Medical Reserve Corps Los Angeles and the Public Health Emergency Volunteer (PHEV) Network. The exercise will be held on May 30, 2026, at the Rio Hondo Park in Pico Rivera.
- Operations Management and Staff co-hosted with the Northwest Mosquito and Vector Control District to conduct the MVCAC Southern Region Annual Calibration Day. Event activities included calibrating ultra-low volume application equipment for many vector control districts in the southern region. Additionally, respirator fit testing was performed in collaboration with our product suppliers Azelis, Vesperis, Clarke, and Target Specialty Products.
- Recruitment of Mosquito Control Technicians (MCTs) for the current mosquito season is currently underway. The first wave of MCTs will start on April 13, 2026.
- All Operations management and staff attended the MVCAC Southern Region Live Continuing Education Conference in Orange County, California. Live education units are required to maintain State of California Department of Public Health Vector Control Technician certifications.

**Environmental Program**

- The Environmental Program Manager (EPM) conducted seven stormwater projects reviews for the City of Los Angeles Bureau of Engineering at the final 100% design stage for compliance with the District's mosquito minimization measures.
- The EPM is currently working to continue the vegetation management at the Los Cerritos Wetlands by assisting the City of Long Beach and the Los Cerritos Wetlands Stewards in renewing their Streambed Alteration Agreement with the California Department of Fish and Wildlife and their Coastal Development Permit with the California Coastal Commission.
- The EPM assisted Contech Engineering Solutions with the development of Standard Operating Procedures for their engineers to understand and incorporate mosquito minimization into their underground detention and infiltration systems.

WORK PERFORMED BY DISTRICT

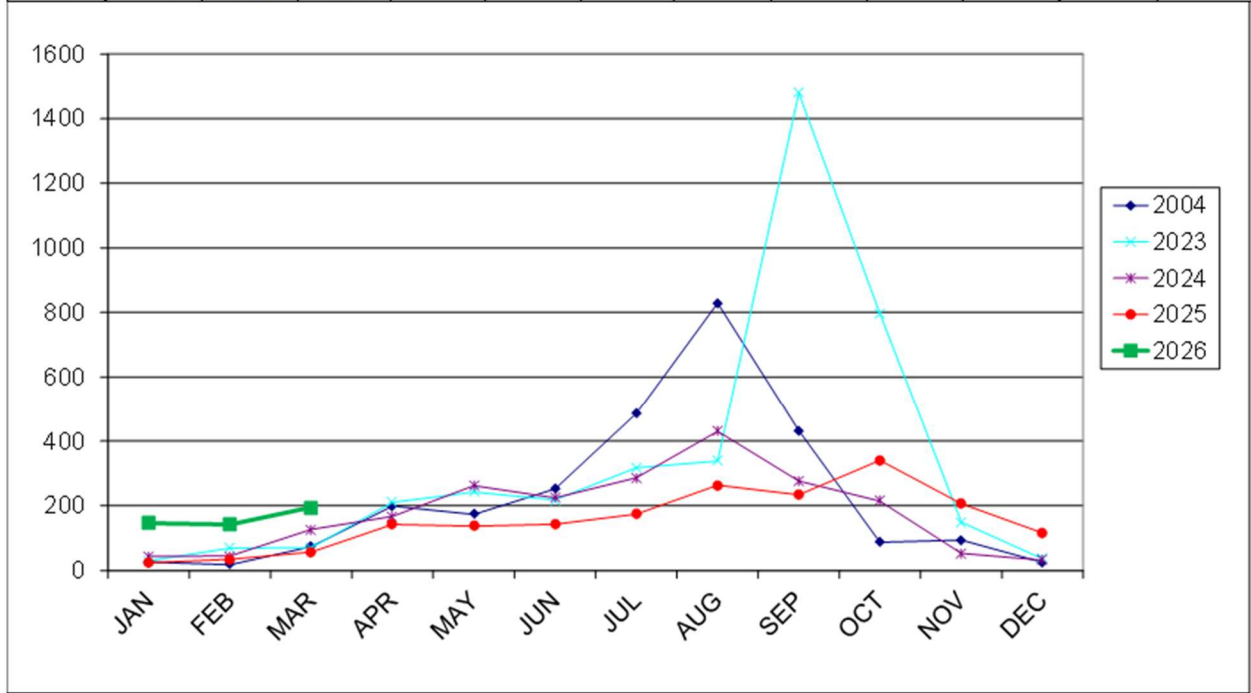
March, 2026

CONTROL AND OPERATIONS

		Hours worked	
		March	2026
Fishing (Mosquitofish)		29	82
Source Reduction		5	8
Mosquito Control	<i>Sources inspected 13,708 / Sources with larvae 6,680</i>	2,866	7,889
Insecticide used:			
Larvicide oils	20.51 gals @ \$45.83 per =	\$	939.97
Altosid P35	51.57 lbs @ \$19.47 per =	\$	1,004.07
Altosid Briquets 30 day	5,211 ea @ \$1.30 ea. =	\$	6,774.30
Altosid Briquets XR	9 ea @ \$4.09 ea. =	\$	36.81
Altosid Pellets	0.86 lbs @ \$27.63 per =	\$	23.76
Altosid Liquid Larvicide	48.64 oz @ \$2.23 per =	\$	108.47
Sumilarv WSP	470 ea @ \$1.62 per =	\$	761.40
Altosid WSP	105 ea @ \$0.98 per =	\$	100.80
Vectobac 12AS	3.61 gals @ \$48.05 per =	\$	173.46
Vectobac G	173.51 lbs @ \$3.06 per =	\$	530.94
Metalarv S-PT	3.65 lbs @ \$30.60 per =	\$	111.69
Vectomax FG	802.64 lbs @ \$9.70 per =	\$	7,785.61
Vectomax WSP	118 ea @ \$1.99 per =	\$	234.82
Natular SC	0 gals @ \$1,403.00 per =	\$	-
Vectolex WDG	5.05 lbs @ \$60.40 per =	\$	305.02
Vectobac WDG	36.42 lbs @ \$45.13 per =	\$	1,643.63
<hr/>			
BMP Control	<i>BMP Lids inspected 1542/BMP Lids treated 308</i>	330	867
Insecticide used:			
Sumilarv WSP	0 ea @ \$1.62 per =	\$	-
CocoBear	1.01 gals @ \$45.83 per =	\$	46.29
Altosid P35	64.94 lbs @ \$19.47 per =	\$	1,264.38
Blackfly Control		67	92
Insecticide used:			
Vectobac 12AS	84.68 gals @ \$48.05 per =	\$	4,068.87
Underground Mosquito Control	<i>UGSD inspected 6,843 / UGSD treated 3609</i>	1,532	3,746
Insecticide used:			
Vectobac 12AS	11.91 gals @ \$48.05 per =	\$	572.28
Vectolex WDG	189.39 lbs @ \$60.40 per =	\$	11,439.16
Fogging		1	1
Insecticide used:			
Duet	0.19 oz @ \$2.05 per =	\$	0.39
Deltagard	0 oz @ \$1.41 per =	\$	-
		Total \$	37,926.12
Supervisory		470	1,337
Continuing Education / Training		486	1,068
Overtime: Community Outreach		16	16
Mosquito Control		0	0
<hr/>			
<u>REPAIR AND MAINTENANCE OF EQUIPMENT</u>			
Vehicles		21	307
Spray Equipment		15	101
Buildings and yards		7	143
		5,845	15,637

**Mosquito Service Request Report**

	JAN	FEB	MAR	APR	MAY	JUN	JUL	AUG	SEP	OCT	NOV	DEC
2004	26	18	74	199	173	252	485	829	432	87	94	25
2023	30	69	71	210	242	218	317	338	1479	796	149	36
2024	44	45	127	167	262	224	286	430	276	214	53	32
2025	24	35	57	142	137	143	174	263	234	340	206	116
2026	146	142	195									



**Breakdown of Monthly Service Requests**

	Mosquitoes	Midges	Swimming Pools	Fish Ponds	Other	Black Flies	Yellow Jackets	Total Service Request	Mosquitofish Requests	Number of Mosquitofish
ARTESIA								0		0
BELL								0		0
BELLFLOWER	3							3		0
BELL GARDENS								0		0
BURBANK	2		2					2		0
CARSON	1							1		0
CERRITOS	4		2	2				4	2	20
COMMERCE	1							1		0
CUDAHY								0		0
DIAMOND BAR	1		1					1		0
DOWNEY	3							3		0
GARDENA								0		0
GLENDALE	9		3					9		0
HAWAIIAN GARDENS	1		1					1		0
HUNTINGTON PARK	1							1		0
LA CANADA FLINTRIDGE	1		1					1		0
LA HABRA HEIGHTS								0		0
LA MIRADA								0		0
LAKEWOOD	5			1				5		0
LONG BEACH	7			3				7	3	30
LOS ANGELES CITY	109		36	5				109	3	30
LOS ANGELES COUNTY	12			1				12	1	10
LYNWOOD								0		0
MAYWOOD								0		0
MONT EBELLO	2			1				2	1	10
NORWALK	4							4		0
PARAMOUNT	1							1		0
PICO RIVERA	2		1					2		0
SAN FERNANDO								0		0
SAN MARINO	1			1				1	1	10
SANTA CLARITA	19		5					19		0
SANTA FE SPRINGS	1							1		0
SIGNAL HILL	1							1		0
SOUTH EL MONTE								0		0
SOUTH GATE								0		0
VERNON								0		0
WHITTIER	4		1	1				4		0
TOTAL	195	0	53	15	0	0	0	195	11	110

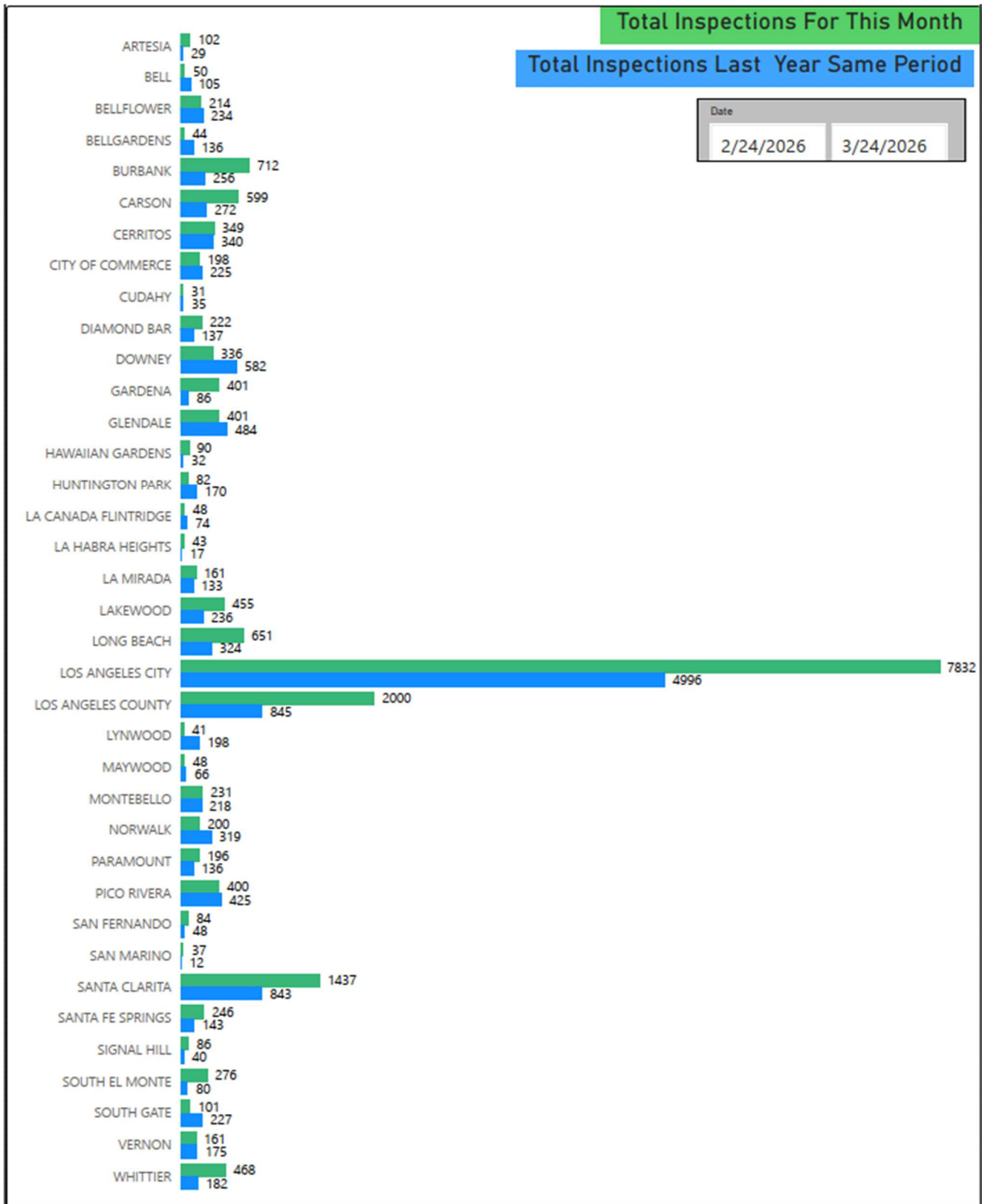
Mosquito Source Activity

City	Non-Pool	Pools	USD Lids	BMP	Gutter Spots	Total Hrs. Activity
+ WHITTIER	99	101	228	40		55.58
+ VERNON	74		57	30		13.57
+ SOUTH GATE	65	12	22	2		9.70
+ SOUTH EL MONTE	133	37	106			40.28
+ SIGNAL HILL	33	2	30	21		12.16
+ SANTA FE SPRINGS	127	9	61	49		26.32
+ SANTA CLARITA	848	81	507		1	235.53
+ SAN MARINO	5	32				3.48
+ SAN FERNANDO	17	9	54	4		9.94
+ PICO RIVERA	74	19	307			23.27
+ PARAMOUNT	115	10	71			18.22
+ NORWALK	78	82	21	19		21.96
+ MONTEBELLO	63	34	134			20.26
+ MAYWOOD	32	5	11			2.75
+ LYNWOOD	16	25				5.53
+ LOS ANGELES COUNTY	540	286	1131	43		225.11
+ LOS ANGELES CITY	2144	1784	3261	621	22	1,191.40
+ LONG BEACH	152	48	432	19		60.87
+ LAKEWOOD	169	50	235	1		39.58
+ LA MIRADA	46	55	47	13		17.72
+ LA HABRA HEIGHTS	15	25	3			5.88
+ LA CANADA FLINTRIDGE	14	25	5	4		9.03
+ HUNTINGTON PARK	40	14	17	11		6.34
+ HAWAIIAN GARDENS	24	3	58	5		6.90
+ GLENDALE	266	90	34	10	1	66.20
+ GARDENA	75	9	272	45		37.30
+ DOWNEY	151	110	72	3		32.88
+ DIAMOND BAR	47	100	68	7		43.67
+ CUDAHY	31					2.05
+ CITY OF COMMERCE	48	3	144	3		19.27
+ CERRITOS	128	42	166	13		29.59
+ CARSON	74	26	458	41		57.28
+ BURBANK	84	68	537	21	2	58.96
+ BELLGARDENS	39	3	2			5.51
+ BELLFLOWER	90	27	71	25	1	23.54
+ BELL	32	5	13			3.60
<b>Total</b>	<b>6000</b>	<b>3238</b>	<b>8712</b>	<b>1056</b>	<b>27</b>	<b>2,448.54</b>

Non-Pool, Pools etc Column - Total # of insp for source type

Date

# STAFF REPORT B



**GREATER LOS ANGELES COUNTY VECTOR CONTROL DISTRICT**

**COMMUNICATIONS REPORT**

**March 2026**

*David Pailin Jr., Communications Manager*  
*Caroline Gongora, Acting Communications Manager*  
*Blake Lynch, Events & Media Coordinator*  
*Liliana Moreno, Education Specialist*  
*Laura Rodriguez Pinto, Education Specialist*  
*Brenda Valencia, Communications Specialist*  
*Celeste Santarrosa, Communications Specialist*  
*Raquel Trinidad, Communications Specialist*

Manager's Summary:

The month of March marked the official start of the spring season and reflected the Communications Department's continued commitment to proactive outreach and preparation for the mosquito season. Through early planning and outreach efforts, the team engaged diverse audiences and raised awareness of the District's services and mosquito prevention practices.

Throughout the month, our Communications Specialists coordinated with cities, organizations, and educational institutions to plan and deliver presentations and workshops. They also attended networking events to connect with local businesses within their respective zones. In conjunction with these efforts, our Events and Media Coordinator led the coordination of the District's participation in several community events and secured opportunities for upcoming months, ensuring strategic alignment with District priorities. At the state level, our Public Information Coordinator scheduled meetings with legislators and their staff as part of the Mosquito and Vector Control Association of California's Legislative Day in Sacramento and managed media inquiries, including a media follow-along along the Los Angeles River to highlight our Black Fly program.

Additionally, our Education Program Specialists maintained strong engagement with schools across the District's service area, visiting 10 schools, delivering 22 classroom presentations, and reaching more than 600 students. They also participated in a Career Day event, further expanding student awareness of vector control and careers within the field.

Alongside these outreach activities, the department continued to refine internal processes, enhance programs, and prepare to launch this year's summer campaign. These efforts highlight the dedication of staff and position the District for an impactful season ahead.

Sincerely,

*Caroline Gongora*

Caroline Gongora

*Acting Communications Manager*

## GREATER LOS ANGELES COUNTY VECTOR CONTROL DISTRICT

### FISCAL REPORT

March 2026

*Maribel Palmer, Finance Manager*

*May Spence, Staff Accountant*

*Laquita Brooks, Staff Accountant*

#### Department's Summary:

This month, staff continued to build on prior progress while focusing on a broad range of financial, administrative, and compliance-related responsibilities to support District operations. Efforts were directed toward maintaining strong internal controls and ensuring consistency across all core accounting functions. Ongoing work on monthly reconciliations remained a priority, with staff making steady progress to keep all accounts current, accurate, and aligned with financial reporting standards.

Day-to-day operations remained active and consistent, with staff processing invoices and issuing checks to meet all accounts payable obligations in a timely and efficient manner. Payroll activities were carefully reviewed and executed, ensuring that all District employees were paid accurately and without delay. In addition, TAP cards were issued to employees as needed, supporting operational needs and enhancing accessibility for staff. These routine processes continue to be carried out with a strong emphasis on accuracy, timeliness, and adherence to established procedures.

A significant area of focus this month was the District's budget review process. This effort involved extensive collaboration between Finance staff, Assistant General Managers, and the General Manager to conduct a detailed, line-by-line review of the current fiscal year budget. The team evaluated expenditures, assessed current budget performance, and identified any necessary adjustments to ensure alignment with operational priorities. In parallel, staff began developing projections for the upcoming fiscal year budget, incorporating updated assumptions and departmental input. While this work is still in progress, the budget process is well-positioned as the District prepares for the upcoming budget review meetings.

Beyond routine financial operations, staff remained engaged in ongoing administrative and organizational support efforts. Attention was given to maintaining organized financial records, reviewing internal processes, and identifying opportunities for improved efficiency where applicable. Monthly reconciliations and financial reviews were conducted with diligence to ensure completeness and reliability of financial data. These efforts contribute to the District's overall fiscal health and reinforce compliance with established policies and best practices.

Included in this month's report is the income statement for the period ending March 31st. Please note that this report is provided for informational purposes only, as it has not yet been fully reconciled; final reconciliation occurs mid-month upon receipt of bank statements.

Sincerely,



Maribel Palmer

*Finance Manager*



	Original Total Budget	Current Total Budget	MTD Activity	YTD Activity	Budget Remaining	
<b>Fund: 10 - General Fund</b>						
<b>Revenue</b>						
<a href="#">10-100-40000</a>	80A Property Taxes - Current - Secured	2,450,000.00	2,450,000.00	0.00	2,592,840.33	-142,840.33
<a href="#">10-100-40005</a>	80B Property Taxes - Current - Unsecured	35,000.00	35,000.00	0.00	61,174.64	-26,174.64
<a href="#">10-100-40010</a>	80C Property Taxes - Prior - Secured	-42,000.00	-42,000.00	0.00	-53,709.31	11,709.31
<a href="#">10-100-40015</a>	80D Property Taxes - Prior - Unsecured	-10,200.00	-10,200.00	0.00	-9,473.87	-726.13
<a href="#">10-100-40020</a>	80F Supplemental Property Taxes - Current	8,000.00	8,000.00	0.00	2,112.83	5,887.17
<a href="#">10-100-40025</a>	80G Supplemental Property Taxes- Prior	5,000.00	5,000.00	0.00	4,103.20	896.80
<a href="#">10-100-40030</a>	80J Property Taxes - Facility Pass-Through	0.00	0.00	0.00	2,979.41	-2,979.41
<a href="#">10-100-40035</a>	88Y State - Homeowners' Property Tax Relief	5,000.00	5,000.00	0.00	4,184.80	815.20
<a href="#">10-100-40040</a>	88F Other State - In-Lieu Taxes	0.00	0.00	0.00	-1.62	1.62
<a href="#">10-100-40045</a>	91C Redevelopment / Housing	0.00	0.00	0.00	1,218.95	-1,218.95
<a href="#">10-100-40100</a>	93E Charges For Services - Parcel Assessme...	21,610,000.00	21,610,000.00	0.00	21,578,356.23	31,643.77
<a href="#">10-100-40200</a>	84D Penalties, Int & Costs on Delinquent Ta...	80,000.00	80,000.00	0.00	94,628.89	-14,628.89
<a href="#">10-100-40210</a>	86A Interest	84,000.00	84,000.00	0.00	228,121.30	-144,121.30
<a href="#">10-100-40800</a>	20Q Administrative Services - Property Tax	-17,375.00	-17,375.00	0.00	-311,316.35	293,941.35
<a href="#">10-100-40805</a>	20S Technical Services - Property Tax	-400,000.00	-400,000.00	0.00	0.00	-400,000.00
<a href="#">10-100-45000</a>	Grant Revenue	0.00	0.00	0.00	-108.14	108.14
<a href="#">10-100-45100</a>	Lease Revenue	0.00	0.00	0.00	1,025.00	-1,025.00
<a href="#">10-100-45200</a>	Investment Income	475,423.00	475,423.00	0.00	278,859.34	196,563.66
<a href="#">10-100-45210</a>	Investment FMV	0.00	0.00	0.00	-31,012.59	31,012.59
<a href="#">10-100-45800</a>	Other Miscellaneous Income	0.00	0.00	0.00	207,852.75	-207,852.75
<a href="#">10-100-45810</a>	Rebates	14,500.00	14,500.00	0.00	0.00	14,500.00
	<b>Revenue Total:</b>	<b>24,297,348.00</b>	<b>24,297,348.00</b>	<b>0.00</b>	<b>24,651,835.79</b>	<b>-354,487.79</b>
<b>Expense</b>						
<a href="#">10-100-60000</a>	Salaried Employees	2,088,834.00	2,088,834.00	219,926.13	1,973,926.00	114,908.00
<a href="#">10-100-60020</a>	Hourly Employees	8,412,365.00	8,412,365.00	583,038.88	5,430,403.91	2,981,961.09
<a href="#">10-100-60040</a>	Seasonal Employees	992,600.40	992,600.40	0.00	522,332.84	470,267.56
<a href="#">10-100-60060</a>	Overtime	164,653.00	164,653.00	4,793.58	38,749.01	125,903.99
<a href="#">10-100-60070</a>	Manager's Auto Allowance	18,000.00	18,000.00	1,384.62	13,153.89	4,846.11
<a href="#">10-100-60075</a>	Leave Cash Outs	217,204.52	217,204.52	4,058.75	225,656.82	-8,452.30
<a href="#">10-100-60800</a>	CalPERS Retirement	1,891,484.00	1,891,484.00	92,158.10	1,745,160.60	146,323.40
<a href="#">10-100-60809</a>	GASB 68 Pension Expense	0.00	0.00	0.00	350.00	-350.00
<a href="#">10-100-60820</a>	401(a) Contributions	188,548.00	188,548.00	11,557.18	115,708.72	72,839.28
<a href="#">10-100-60840</a>	Medicare	168,019.00	168,019.00	11,695.13	119,850.81	48,168.19
<a href="#">10-100-60849</a>	State Unemployment Insurance	69,466.00	69,466.00	599.84	59,171.51	10,294.49
<a href="#">10-100-60850</a>	Medical & Health Insurance	2,381,840.00	2,381,840.00	176,458.02	1,427,273.71	954,566.29
<a href="#">10-100-60851</a>	Retiree Medical Benefits	482,635.80	482,635.80	3,326.19	372,622.03	110,013.77
<a href="#">10-100-60852</a>	HRA Tier IV - Active	23,483.00	23,483.00	0.00	0.00	23,483.00
<a href="#">10-100-60870</a>	Dental Insurance	104,748.00	104,748.00	16,206.66	136,605.68	-31,857.68
<a href="#">10-100-60880</a>	Vision Insurance	14,245.00	14,245.00	1,176.04	9,243.14	5,001.86
<a href="#">10-100-60890</a>	Short Term Disability	92,444.13	92,444.13	8,163.26	59,523.89	32,920.24
<a href="#">10-100-60901</a>	Tuition Reimbursement	12,000.00	12,000.00	0.00	572.00	11,428.00
<a href="#">10-100-61000</a>	Professional Services	295,000.00	295,000.00	0.00	232,523.19	62,476.81
<a href="#">10-100-61020</a>	Payroll Processing Fees	100,000.00	100,000.00	0.00	5,385.24	94,614.76
<a href="#">10-100-61030</a>	Accounting and Auditing	35,000.00	35,000.00	0.00	12,000.00	23,000.00
<a href="#">10-100-61040</a>	Pre & Post Employment Screening	23,244.90	23,244.90	0.00	3,436.30	19,808.60
<a href="#">10-100-61050</a>	Legal Services	150,000.00	150,000.00	0.00	115,941.22	34,058.78
<a href="#">10-100-61060</a>	Computer Consultant Services	12,000.00	12,000.00	1,225.00	2,174.50	9,825.50
<a href="#">10-100-61075</a>	Prop 218 Expenses	0.00	0.00	0.00	17,179.80	-17,179.80
<a href="#">10-100-61090</a>	Facilities Expansion Services	700,000.00	700,000.00	4,696.92	80,262.48	619,737.52
<a href="#">10-100-61800</a>	Board of Trustee Stipends	45,000.00	45,000.00	2,900.00	22,900.00	22,100.00
<a href="#">10-100-61810</a>	Board Meeting Expenses	6,000.00	6,000.00	1,045.82	5,072.17	927.83

**Income Statement**

**For Fiscal: 2025-2026 Period Ending: 03/31/2026**

	<b>Original Total Budget</b>	<b>Current Total Budget</b>	<b>MTD Activity</b>	<b>YTD Activity</b>	<b>Budget Remaining</b>	
<a href="#">10-100-62010</a>	Continuing Education & Seminars	156,235.00	156,235.00	20,104.65	82,154.85	74,080.15
<a href="#">10-100-62030</a>	Uniforms	62,436.00	62,436.00	5,627.14	31,356.60	31,079.40
<a href="#">10-100-62035</a>	Foot Wear	32,350.00	32,350.00	3,091.99	13,103.01	19,246.99
<a href="#">10-100-63010</a>	Security Equipment and Expense	32,115.00	32,115.00	182.50	12,621.77	19,493.23
<a href="#">10-100-63020</a>	Internet Expenses	35,000.00	35,000.00	2,078.75	16,863.19	18,136.81
<a href="#">10-100-63030</a>	Website Services	89,844.00	89,844.00	1,875.00	47,265.13	42,578.87
<a href="#">10-100-63040</a>	Wireless Telephone	99,741.00	99,741.00	0.00	73,927.14	25,813.86
<a href="#">10-100-63210</a>	Computer Software & Accessories	17,513.00	17,513.00	0.00	14,376.55	3,136.45
<a href="#">10-100-63510</a>	IT Subscriptions	76,117.00	76,117.00	8,072.54	85,317.16	-9,200.16
<a href="#">10-100-64110</a>	Meetings & Supplies	30,449.00	30,449.00	115.02	11,424.48	19,024.52
<a href="#">10-100-64120</a>	Office Supplies	40,552.00	40,552.00	6,980.11	34,092.15	6,459.85
<a href="#">10-100-64130</a>	Supplies & Equipment	67,031.00	67,031.00	758.61	14,532.24	52,498.76
<a href="#">10-100-64150</a>	Postage Expenses	6,064.00	6,064.00	226.74	951.57	5,112.43
<a href="#">10-100-65010</a>	General Fund - Insurance	33,147.00	33,147.00	0.00	30,593.00	2,554.00
<a href="#">10-100-65020</a>	Worker's Compensation Insurance	434,085.00	434,085.00	0.00	428,336.00	5,749.00
<a href="#">10-100-65030</a>	Property Insurance	64,100.00	64,100.00	0.00	47,605.00	16,495.00
<a href="#">10-100-65040</a>	Liability Insurance	416,832.00	416,832.00	0.00	418,247.00	-1,415.00
<a href="#">10-100-65050</a>	Fidelity Insurance	3,364.00	3,364.00	0.00	1,691.00	1,673.00
<a href="#">10-100-65510</a>	Permits & Fees	7,750.00	7,750.00	0.00	5,457.98	2,292.02
<a href="#">10-100-65610</a>	Memberships & Associations	39,795.00	39,795.00	440.00	42,368.94	-2,573.94
<a href="#">10-100-66010</a>	Janitorial Expenses	23,500.00	23,500.00	1,553.52	12,948.59	10,551.41
<a href="#">10-100-66110</a>	Electricity & Gas Costs	203,345.00	203,345.00	8,947.39	79,734.44	123,610.56
<a href="#">10-100-66120</a>	Waste Disposal	28,795.00	28,795.00	0.00	10,931.04	17,863.96
<a href="#">10-100-66130</a>	Water	33,170.00	33,170.00	1,217.97	17,092.62	16,077.38
<a href="#">10-100-67520</a>	Fuel	0.00	0.00	0.00	48.51	-48.51
<a href="#">10-100-69010</a>	Miscellaneous Expense	0.00	0.00	0.00	49.79	-49.79
<a href="#">10-100-69099</a>	Clearing Account	0.00	0.00	0.00	-56.15	56.15
<a href="#">10-100-80090</a>	Other Capital	0.00	0.00	0.00	4,806.75	-4,806.75
<a href="#">10-100-95500</a>	Interest Expense - Leases	564,671.25	564,671.25	0.00	45,720.70	518,950.55
<a href="#">10-100-95800</a>	Amortization Expense - Leases	600,000.00	600,000.00	0.00	0.00	600,000.00
<a href="#">10-200-61070</a>	Advertising	90,750.00	90,750.00	0.00	8,935.79	81,814.21
<a href="#">10-200-61080</a>	Public Outreach	15,675.00	15,675.00	1,968.07	20,114.61	-4,439.61
<a href="#">10-200-61200</a>	Educational Materials & Supplies	11,711.00	11,711.00	0.99	1,902.98	9,808.02
<a href="#">10-200-67520</a>	Fuel	21,170.00	21,170.00	130.14	3,660.27	17,509.73
<a href="#">10-200-69010</a>	Miscellaneous Expense	0.00	0.00	0.00	27.99	-27.99
<a href="#">10-200-80010</a>	Computer Assets	0.00	0.00	0.00	2.97	-2.97
<a href="#">10-200-80070</a>	Equipment	0.00	0.00	0.00	589.94	-589.94
<a href="#">10-300-67010</a>	Chemicals	622,650.00	622,650.00	0.00	441,274.32	181,375.68
<a href="#">10-300-67110</a>	Support Equipment	95,495.00	95,495.00	6,667.60	65,828.58	29,666.42
<a href="#">10-300-67120</a>	Aerial Surveillance	19,250.00	19,250.00	0.00	0.00	19,250.00
<a href="#">10-300-67520</a>	Fuel	303,387.00	303,387.00	137.76	176,526.05	126,860.95
<a href="#">10-300-80090</a>	Other Capital	45,000.00	45,000.00	0.00	23,784.91	21,215.09
<a href="#">10-400-66020</a>	HVAC & Other Building Improvements	23,000.00	23,000.00	691.50	12,311.67	10,688.33
<a href="#">10-400-66030</a>	Telephone Land Lines	0.00	0.00	0.00	24.66	-24.66
<a href="#">10-400-66810</a>	Building Supplies	59,990.00	59,990.00	7,795.15	28,466.94	31,523.06
<a href="#">10-400-67510</a>	Vehicle Repair & Services	178,533.00	178,533.00	10,157.64	121,002.85	57,530.15
<a href="#">10-400-67520</a>	Fuel	9,660.00	9,660.00	120.18	3,674.44	5,985.56
<a href="#">10-400-67810</a>	Parts & Supplies	106,785.00	106,785.00	4,171.86	38,665.58	68,119.42
<a href="#">10-400-67820</a>	Safety & First Aid Supplies & Equipment	46,680.00	46,680.00	1,001.47	5,014.85	41,665.15
<a href="#">10-400-67830</a>	Landscape Maintenance	39,830.00	39,830.00	517.50	30,016.71	9,813.29
<a href="#">10-400-67840</a>	GPS	25,610.00	25,610.00	0.00	14,740.95	10,869.05
<a href="#">10-400-67850</a>	Hazardous Waste	8,230.00	8,230.00	0.00	2,956.86	5,273.14
<a href="#">10-400-80020</a>	Vehicles	404,000.00	404,000.00	4,341.49	174,772.69	229,227.31
<a href="#">10-400-80090</a>	Other Capital	96,000.00	96,000.00	0.00	53,956.87	42,043.13
<a href="#">10-500-67520</a>	Fuel	29,281.00	29,281.00	0.00	10,771.70	18,509.30
<a href="#">10-500-67910</a>	Shipping & Testing	77,200.00	77,200.00	16.91	54,527.71	22,672.29
<a href="#">10-500-67920</a>	Field Equipment	25,000.00	25,000.00	1,739.36	20,447.71	4,552.29
<a href="#">10-500-67930</a>	Lab Supplies & Equipment	20,645.00	20,645.00	1,182.24	4,956.23	15,688.77

**Income Statement**

For Fiscal: 2025-2026 Period Ending: 03/31/2026

[10-500-80060](#)

	Original Total Budget	Current Total Budget	MTD Activity	YTD Activity	Budget Remaining
SIT Capital	35,000.00	35,000.00	0.00	12,530.85	22,469.15
<b>Expense Total:</b>	<b>24,297,348.00</b>	<b>24,297,348.00</b>	<b>1,246,321.91</b>	<b>15,662,228.19</b>	<b>8,635,119.81</b>
<b>Fund: 10 - General Fund Surplus (Deficit):</b>	<b>0.00</b>	<b>0.00</b>	<b>-1,246,321.91</b>	<b>8,989,607.60</b>	
<b>Total Surplus (Deficit):</b>	<b>0.00</b>	<b>0.00</b>	<b>-1,246,321.91</b>	<b>8,989,607.60</b>	

**Income Statement**

For Fiscal: 2025-2026 Period Ending: 03/31/2026

**Group Summary**

Account Type	Original Total Budget	Current Total Budget	MTD Activity	YTD Activity	Budget Remaining
<b>Fund: 10 - General Fund</b>					
Revenue	24,297,348.00	24,297,348.00	0.00	24,651,835.79	-354,487.79
Expense	24,297,348.00	24,297,348.00	1,246,321.91	15,662,228.19	8,635,119.81
<b>Fund: 10 - General Fund Surplus (Deficit):</b>	<b>0.00</b>	<b>0.00</b>	<b>-1,246,321.91</b>	<b>8,989,607.60</b>	<b>-8,989,607.60</b>
<b>Total Surplus (Deficit):</b>	<b>0.00</b>	<b>0.00</b>	<b>-1,246,321.91</b>	<b>8,989,607.60</b>	

**Income Statement**

For Fiscal: 2025-2026 Period Ending: 03/31/2026

**Fund Summary**

Fund	Original Total Budget	Current Total Budget	MTD Activity	YTD Activity	Budget Remaining
10 - General Fund	0.00	0.00	-1,246,321.91	8,989,607.60	-8,989,607.60
<b>Total Surplus (Deficit):</b>	<b>0.00</b>	<b>0.00</b>	<b>-1,246,321.91</b>	<b>8,989,607.60</b>	



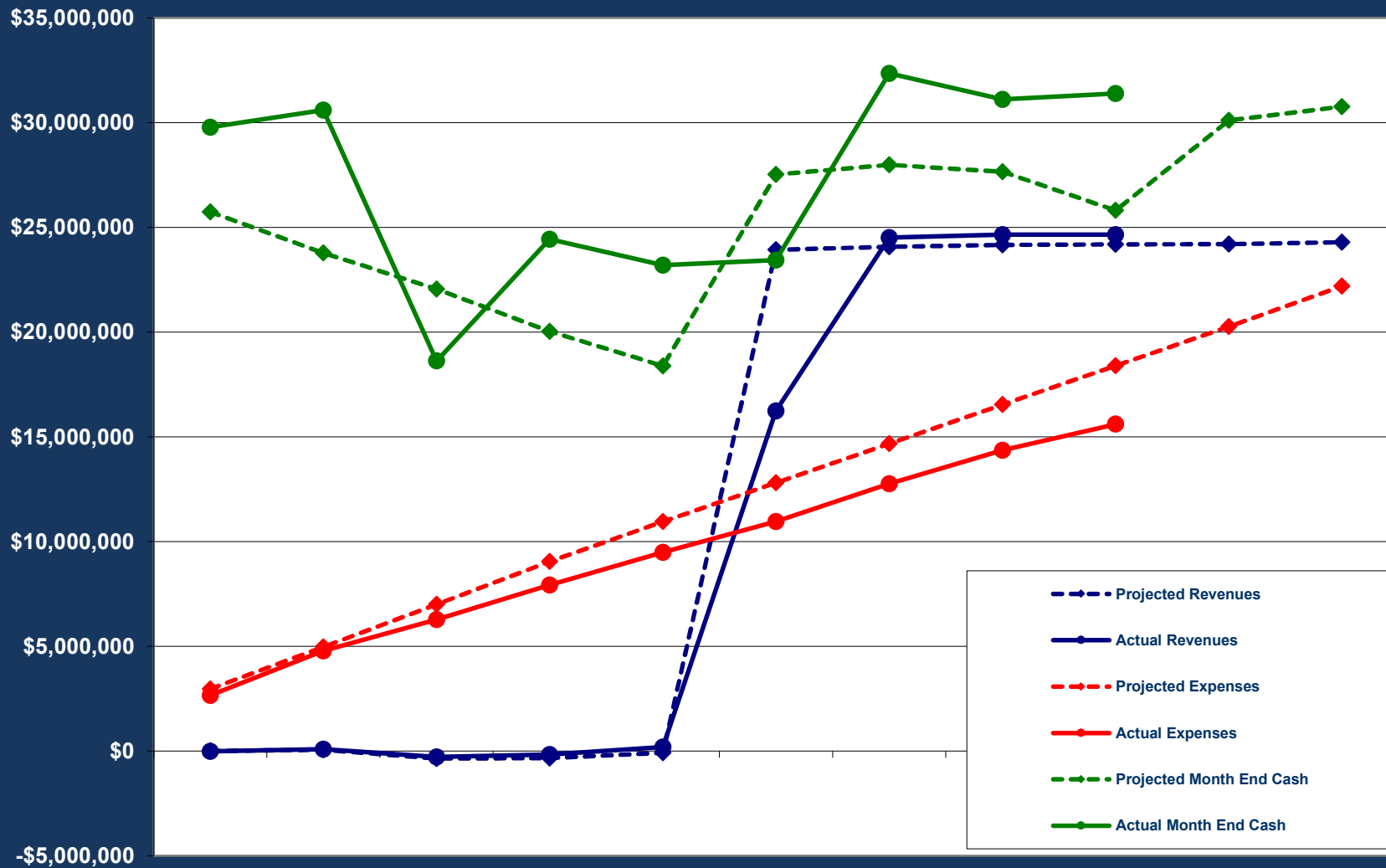
Account	Name	Balance
<b>Fund: 10 - General Fund</b>		
<b>Assets</b>		
<a href="#">10-100-10000</a>	Petty Cash	0.00
<a href="#">10-100-10005</a>	Escrow Cash Account	0.00
<a href="#">10-100-10010</a>	Chase - Payables	473,614.35
<a href="#">10-100-10015</a>	Chase - Payroll	3,753,640.16
<a href="#">10-100-10020</a>	Chase - Employee Fund	0.00
<a href="#">10-100-10025</a>	LA County - Pooled Cash & Investments	18,146,647.06
<a href="#">10-100-10030</a>	LAIF	3,810,174.29
<a href="#">10-100-10050</a>	LAIF FMV	8,585.16
<a href="#">10-100-10100</a>	CalTrust	3,074,804.71
<a href="#">10-100-10200</a>	VCJPA	2,131,631.00
<a href="#">10-100-11000</a>	Accounts Receivable	0.00
<a href="#">10-100-11100</a>	110 Taxes Receivable-Current Secured	1,249,928.42
<a href="#">10-100-11105</a>	111 Taxes Receivable-Current Unsecured	15,246.21
<a href="#">10-100-11110</a>	112 Taxes Receivable-Delinquent Secured	-108,496.96
<a href="#">10-100-11115</a>	113 Taxes Receivable-Delinquent Unsecur	-14,311.84
<a href="#">10-100-11120</a>	114 Service Charge Receivable-Current	10,123,508.27
<a href="#">10-100-11125</a>	115 Service Charge Receivable-Delinquent	-584,606.70
<a href="#">10-100-11130</a>	125 Interest Receivable	67,558.07
<a href="#">10-100-11135</a>	141 Due From Other Funds-Year End	0.00
<a href="#">10-100-11200</a>	Interest Receivable	0.00
<a href="#">10-100-11300</a>	Employee Loan Receivable	0.00
<a href="#">10-100-11400</a>	Prepaid Expenses	24,673.61
<a href="#">10-100-11500</a>	Inventory	0.00
<a href="#">10-100-11600</a>	Due From Other Governments	-256,837.20
<a href="#">10-100-12000</a>	Land	2,228,045.31
<a href="#">10-100-12005</a>	Land Improvements	23,747.00
<a href="#">10-100-12100</a>	Buildings	19,883,654.00
<a href="#">10-100-12105</a>	Building Improvements	1,141,508.44
<a href="#">10-100-12110</a>	Vehicles	3,811,313.11
<a href="#">10-100-12115</a>	Machinery	243,726.98
<a href="#">10-100-12120</a>	Computers	468,249.46
<a href="#">10-100-12125</a>	Equipment & Machinery	687,306.76
<a href="#">10-100-12130</a>	Furniture and Fixtures	334,281.99
<a href="#">10-100-12135</a>	Mobile Education Unit	36,380.48
<a href="#">10-100-12200</a>	Accumulated Depreciation	-9,531,303.64
<a href="#">10-100-13000</a>	Right of Use Lease Asset - Building	0.00
<a href="#">10-100-13100</a>	Accumulated Amortization Lease - Buildin	0.00
<a href="#">10-100-13200</a>	Lease Receivable - Cell Towers	188,769.54
<a href="#">10-100-19000</a>	Deferred Outflow - Pension	3,641,435.00
<a href="#">10-100-19100</a>	Deferred Outflow - OPEB	3,563,508.00
	<b>Total Assets:</b>	<b>68,636,381.04</b>
<b>Liability</b>		
<a href="#">10-100-20000</a>	Accounts Payable	0.00
<a href="#">10-100-21000</a>	Accrued Salaries	147,054.00
<a href="#">10-100-21100</a>	Employee Paychecks Payable	0.00
<a href="#">10-100-21101</a>	Payroll Correction	4.03
<a href="#">10-100-21105</a>	Federal Withholding Payable	42,286.05
<a href="#">10-100-21110</a>	State Withholding Payable	17,600.58
<a href="#">10-100-21115</a>	Medicare Payable	12,293.14
<a href="#">10-100-21120</a>	FICA Payable	0.00
<a href="#">10-100-21125</a>	SDI Payable	0.00
<a href="#">10-100-21130</a>	Miscellaneous Deductions	50.00
		<b>68,636,381.04</b>

**Balance Sheet**

**As Of 03/30/2026**

<b>Account</b>	<b>Name</b>	<b>Balance</b>
<a href="#">10-100-21190</a>	Employee Fund Contributions	1,923.71
<a href="#">10-100-21200</a>	Benefits Payable - Standard Insurance Cor	57,998.65
<a href="#">10-100-21205</a>	Benefits Payable - EyeMed	-771.64
<a href="#">10-100-21210</a>	Benefits Payable - AFLAC	1,177.44
<a href="#">10-100-21215</a>	Benefits Payable - American Fidelity	3,056.84
<a href="#">10-100-21220</a>	PERS Health Payable	75,478.97
<a href="#">10-100-21300</a>	Mission Square 401A Plan - Employee Con	2,713.75
<a href="#">10-100-21301</a>	Mission Square 401A Plan - Employee Loa	506.34
<a href="#">10-100-21302</a>	Mission Square 401A Plan - Employer Con	5,782.58
<a href="#">10-100-21310</a>	Mission Square 457 Plan - Employee Conti	1,426.66
<a href="#">10-100-21320</a>	Nationwide & TDS 457 Plan - Employee Cc	8,570.00
<a href="#">10-100-21350</a>	CalPERS Payable	64,089.11
<a href="#">10-100-21360</a>	CalPERS 457 Plan - Employee Contribution	6,587.04
<a href="#">10-100-21361</a>	CalPERS 457 Plan - Employee Loan	214.96
<a href="#">10-100-21700</a>	Accrued Compensated Absences	1,035,780.85
<a href="#">10-100-21800</a>	Net Pension Liability	9,415,148.00
<a href="#">10-100-21900</a>	OPEB Liability	6,905,779.00
<a href="#">10-100-22000</a>	Short-Term Lease Liability - Building	595,963.48
<a href="#">10-100-22100</a>	Long-Term Lease Liability - Building	10,356,486.79
<a href="#">10-100-22200</a>	Accrued Interest - Leases - Building	-150,820.28
<a href="#">10-100-29000</a>	Deferred Inflow - Pension	73,769.00
<a href="#">10-100-29100</a>	Deferred Inflow - OPEB	915,210.00
<a href="#">10-100-29200</a>	Deferred Inflow - Leases	227,197.08
	<b>Total Liability:</b>	<b>29,822,556.13</b>
<b>Equity</b>		
<a href="#">10-100-30000</a>	Net Position - Unrestricted	17,588,625.31
<a href="#">10-100-30100</a>	Net Position - Restricted	0.00
<a href="#">10-100-30200</a>	Net Position - Prior Period Adjustment	0.00
<a href="#">10-100-30900</a>	Net Position - Reserves	0.00
<a href="#">10-100-30901</a>	Prop 218 Reserve	2,000,000.00
<a href="#">10-100-30902</a>	Emergency Vector Control Reserve	2,200,000.00
<a href="#">10-100-30903</a>	Capital Designated Reserve	1,722,176.00
<a href="#">10-100-30904</a>	Operations Designated Reserve	861,046.00
<a href="#">10-100-30905</a>	OPEB Designated Reserve	1,200,000.00
<a href="#">10-100-30906</a>	Vehicle Replacement Reserve	218,023.00
<a href="#">10-100-30907</a>	Compensated Absences Reserve	150,000.00
<a href="#">10-100-30908</a>	Earthquake Reserve	1,084,347.00
<a href="#">10-100-30909</a>	Facility Expansion Project Reserve	2,800,000.00
	<b>Total Beginning Equity:</b>	<b>29,824,217.31</b>
Total Revenue		24,651,835.79
Total Expense		15,662,228.19
<b>Revenues Over/Under Expenses</b>		<b>8,989,607.60</b>
	<b>Total Equity and Current Surplus (Deficit):</b>	<b>38,813,824.91</b>
	<b>Total Liabilities, Equity and Current Surplus (Deficit):</b>	<b><u>68,636,381.04</u></b>

## GREATER LOS ANGELES VECTOR CONTROL DISTRICT Chart of Financial Activity: FY 2025-2026



**GREATER LOS ANGELES COUNTY VECTOR CONTROL DISTRICT**

**HUMAN RESOURCES REPORT**

**March 2026**

*Cindy Reyes, Human Resources Manager*

*Melissa Munoz, Human Resources Analyst*

*Brianna Esquivias, Human Resources Analyst*

*Vacant, Human Resources Specialist (Limited-Term)*

**Manager's Summary**

Spring has brought a renewed sense of energy and momentum. Our team has certainly felt that shift, which is reflected in the meaningful work completed this month, including recruitments, semi-annual events, and ongoing projects.

Recruitment remained a major focus for our department. We continued efforts to fill key roles, including Vector Field Assistant, limited-term Human Resources Specialist, and seasonal Mosquito Control Technician vacancies. To support these efforts, we held an additional recruitment planning meeting for the Mosquito Control Technician position and adjusted our strategy, resulting in over 200 applications for review by our team and Operations.

We also reviewed applications for the Vector Field Assistant and Human Resources Specialist positions, receiving over 450 applications for the Human Resources Specialist role. We hosted an online exam for qualified candidates and conducted interviews for both the Mosquito Control Technician and Vector Field Assistant positions. Human Resources Specialist interviews are scheduled to begin in April.

These recruitment efforts require significant coordination across teams and remain essential to ensuring all departments are fully staffed ahead of mosquito season. We also began compiling 2025 recruitment data for Assembly Bill 2561 reporting requirements and the upcoming presentation we will be sharing with the Board of Trustees.

The California Department of Public Health (CDPH) announced the semi-annual Vector Control Certified Technician exam, and our team has started facilitating the process. This includes notifying supervisors of eligibility, collecting and processing applications and payments, and coordinating with CDPH, which will host the exam at our Santa Fe Springs facility in May.

Lastly, we continued finalizing the implementation of the benefits enrollment module in our Tyler system. We met with the Tyler team to review the module, test functionality, and make necessary adjustments. This process is time-consuming, as it involves developing and testing different scenarios to ensure employees have a positive experience. Our goal is to have the module ready for Open Enrollment later this year.

It has been a busy and productive month, and I appreciate our team's continued dedication and support. We look forward to the work ahead.

Sincerely,



Cindy Reyes, MPA, IPMA-SCP  
*Human Resources Manager*

**Department Trainings & Workshops**

<b>Date</b>	<b>Presenter</b>	<b>Topic</b>	<b>Location</b>
3/11/26	AALRR	A Comprehensive Guide to Proper Record Retention and Responding to Requests	Webinar
3/18/26	CPS HR	Women's History Month Panel	Webinar
3/19/26	CalPERS	457 Deferred Compensation Plan	Webinar
3/25/26	Neogov	Smarter Hiring for Government HR: AI in Action	Webinar
3/30/26	Neogov	HR as a Strategic Partner: What It Really Looks Like in Local Government	Webinar

**Department Vacancies & Recruitment Status**

<b>Department</b>	<b># of budgeted positions</b>	<b># of filled positions</b>	<b># of vacant positions</b>
Executive & Administrative Services	16	15	1
Scientific-Technical	10	9	1
Operations	58	58	0
Communications	8	8	0
Facilities & Fleet Maintenance	7	7	0
<b>Total Full-Time Vacancies</b>	<b>99</b>	<b>97</b>	<b>2</b>

**Executive & Administrative Services**

In July 2025, the Board approved a limited-term Human Resources Specialist position, and our team continues to recruit for the role.

- **Human Resources Specialist (Limited-Term)** – Job bulletin reposted on 2/26/26.

**Scientific-Technical**

The Vector Field Assistant assignment in the Sylmar branch became vacant, and Human Resources has started the recruitment process to fill the role.

- **Vector Field Assistant** – Job bulletin posted on 2/9/26.

**Operations**

Human Resources has started the annual Mosquito Control Technician recruitment for seasonal help.

- **Mosquito Control Technician (Seasonal)** – Job bulletins posted on 2/10/26.

GREATER LOS ANGELES COUNTY VECTOR CONTROL DISTRICT

FACILITY AND FLEET MAINTENANCE REPORT

March 2026

*Fernando Martinez, Facility and Fleet Maintenance Manager*

*Thomas Griep, Dustin Shaffer, Robert Rodriguez, Herman Chavez, Robert Torres, Maintenance Mechanics*

*Patrick Sanders, Maintenance Worker/ Janitor*

**Repair and Maintenance of Equipment**

*Vehicles – 306 hours*

*Spray Equipment – 16 hours*

*Building and Yards – 268 hours*

Vehicle Mileage:	<u>March 2026</u>	<u>2026</u>
	35,856	80,897

- 1. The maintenance staff serviced and repaired a total of 18 vehicles across the Santa Fe Springs and Sylmar locations, which included performing routine 5,000-mile services on 13 of those vehicles.*
- 2. The maintenance staff is preparing for the upcoming season by servicing the gutter Jeeps and getting them ready for use at both the Santa Fe Springs and Sylmar locations. They have completed nine Jeeps, four in Sylmar and five in Santa Fe Springs.*
- 3. The maintenance staff completed the vehicle setup features for the new vehicles purchased in October 2025. For the F-150 Lightning, they installed a tonneau cover, warning lights, a traffic control arrow board, and bed storage. For the Sylmar black fly truck, they completed the fabrication and installation of bed storage, warning lights, wash water tank, and a light bar.*
- 4. Prepared and sent an RFP (Request for Proposal) for a new electric vehicle for the Scientific and Technology Department.*
- 5. Maintenance staff helped retrieve the black fly truck, which was stuck in the LA Flood Control Channel.*

## GREATER LOS ANGELES COUNTY VECTOR CONTROL DISTRICT

### INFORMATION TECHNOLOGY

March 2026

*Rudy Serrano, Information Technology Manager*  
*Alan Shaffer, Information Technology Administrator*  
*Danyelle Frakes-Lewis, GIS/IT Analyst*  
*Saul Ruiz, Applications Development Specialist*

#### **SUMMARY FOR INFORMATION TECHNOLOGY ACTIVITIES FOR March 2026:**

As every month, the IT Department has been providing ongoing support and maintenance of the network infrastructure, user assistance for PCs, mobile devices and developing software solutions to meet organizational needs.

- General IT support for Santa Fe Springs, Pacoima, & Sylmar users
- Continue to actively work with Spectrum to upgrade Internet speeds in Sylmar
- Implementation of revamped District website Service Request form for ADA compliance
- Completed new employee onboarding IT tasks
- Maintenance Department Building Ticketing System Development
- Identified and patched glitches with operations applications
- Badge Printer: Installed and configured printer drivers on end-user laptops
- Badge Printer: Conducted user training
- Email Web Access - Set 2FA for All users
- GIS - LA City Council District 6
- GIS - LA City Council District 3 Sources
- GIS – Commerce
- Review Power BI reporting with Application Development Specialist
- Email box configuration - Mosquito Pools Email Box management
- Helpdesk - Opening Shared Files troubleshooting
- Setup a new laptop for an end-user in Administration department
- Moved user workstation to new location for the Sci-Tech department
- Diagnosed and resolved an issue with a non-functioning cell extender in the Operations department